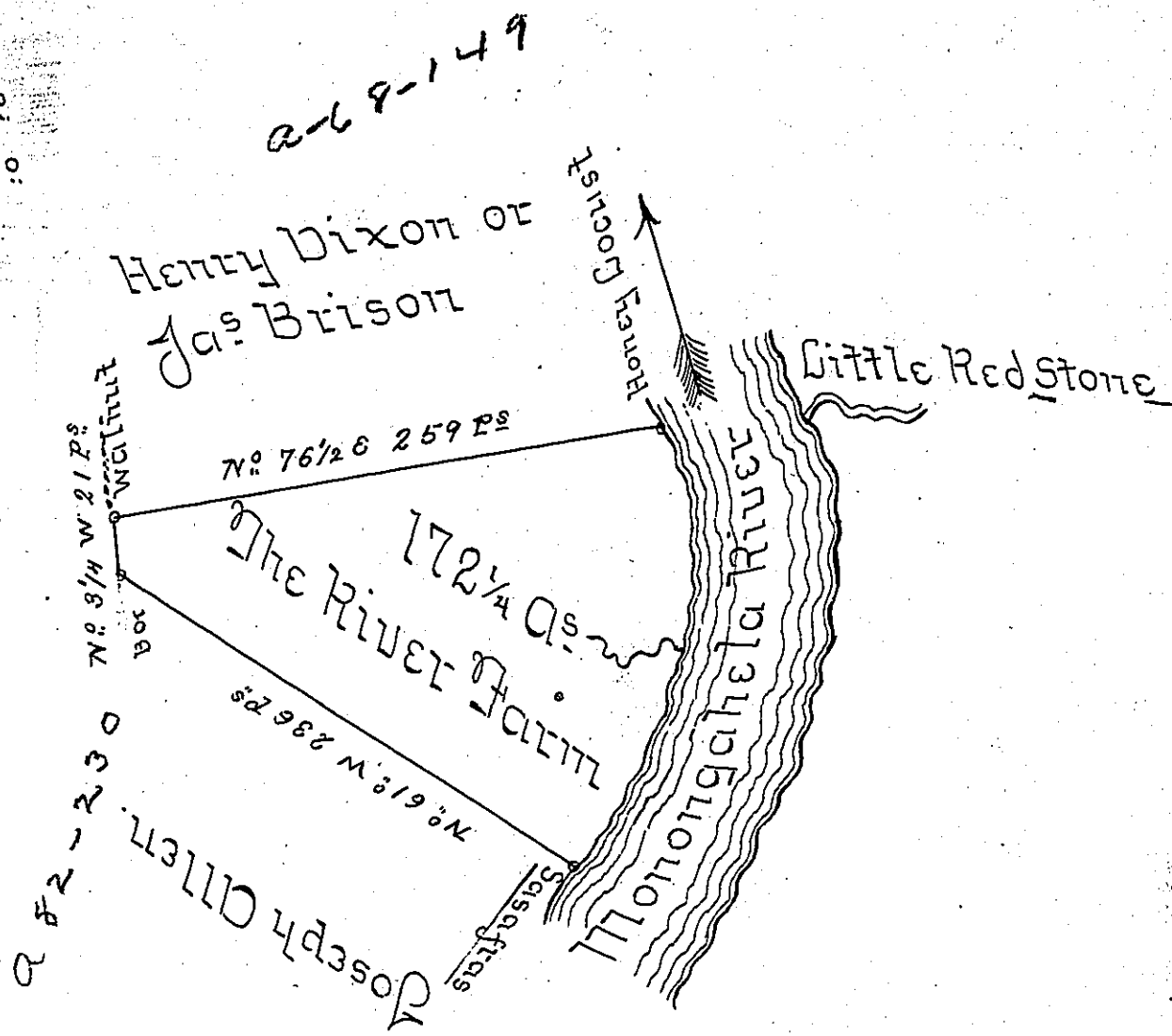


Courses &c up the River

S^o 25^o E 21 P^s
South 68 D^o
S^o 20^o W 90 D^o
S^o 41^o W 34 D^o

213

vacant



A Draught of a Survey Called "The River Farm" situate on ye Monongahela River in Washington County, containing 172 1/4 Acs and ye usual Allow^{ce} for Highways &c. executed August 12th 1788 in Pursuance of a Warrant granted to David England for 160 Acs dated 17th 24th 1788

Note This Tract is included in a Survey made Decem^r 18th 1787 on an order in ye name of Jos Yeates dated Apr^l 3^d 1769 No 595 - Order'd to be Accepted - See Judgement of B^d P^{ty} of 1st Sept^r 1788

Presley Nevill J. U. S.
Matt^w Ritchie)

Jno. Lukens Esq^r S^rgent

IN TESTIMONY that the above is a copy of the original remaining on file in the Department of Internal Affairs of Pennsylvania, made conformably to an Act of Assembly approved the 16th day of February, 1833, I have hereunto set my Hand and caused the Seal of said Department to be affixed at Harrisburg, this eleventh day of October 1904.

James P. Brown
Secretary of Internal Affairs.